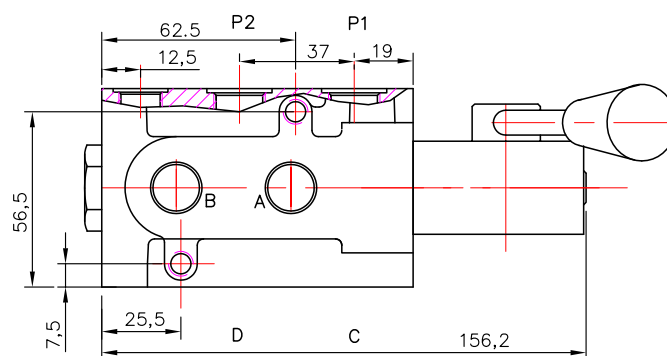
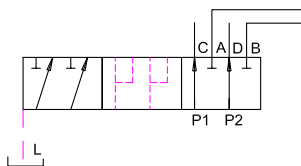


6 PORT SELECTOR VALVE / HANDLE OPERATED

DVH-6/2-A11-GKZ1 are with Hand control system. They are used as link between two consumers and the basic directional valve, when we want to control both consumers alternately by means of one basic directional valve.



code	Threaded connections
G	P1, P2, A, B, C, D – G3/8 ; L = G1/4

for stacking 1–5 units

Flow rate		l/min	50
max P	with L	bar	315
max P	without L	bar	210
oil temperature		°C	–20+70
viscosity		mm ² /s	15–380
filtration	NAS1638		9

